

How to...

BELMAKER LIGHT

User Manual

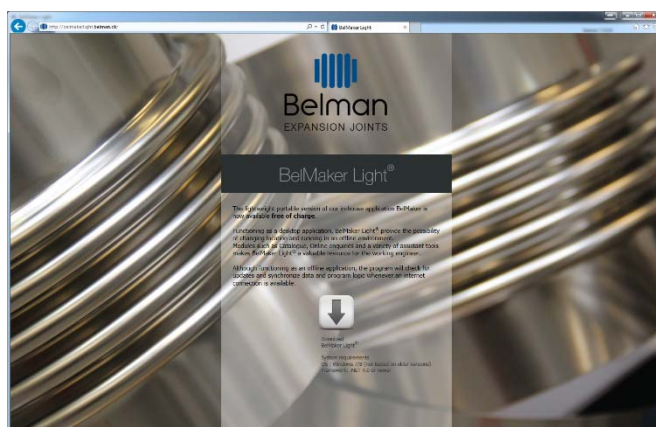
The lightweight portable version of our in-house application BelMaker is now available **free of charge**. Functioning as a desktop application, BelMaker Light® provides the possibility of changing location and running in an offline environment.

Modules such as Catalogue, Online enquiries and a variety of assistant tools makes BelMaker Light® a valuable resource for the working engineer.

DOWNLOAD & REGISTRATION

1. BelMaker Light® is available as a ClickOnce application from the following link: <http://belmakerlight.belman.dk/>
2. Press the download symbol to begin installation, which automatically will install the current version of the software.

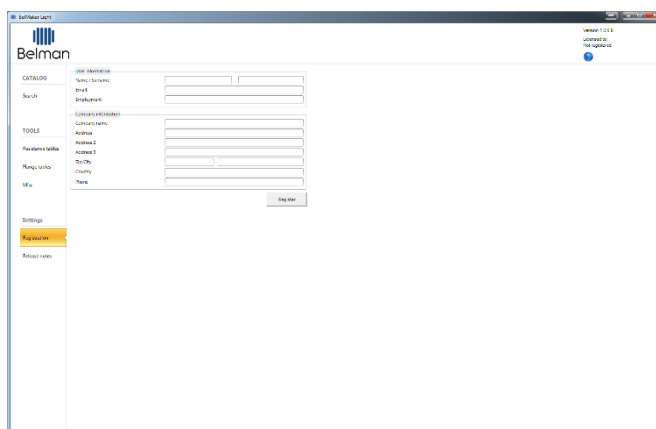
If you are not able to use ClickOnce applications, please contact us. Then we will provide another installation method.



3. When started for the first time, the software will prompt for registration details. Minimum details to register is: name, email and company name.

Registration details can be updated any time under **Settings → Registration**.

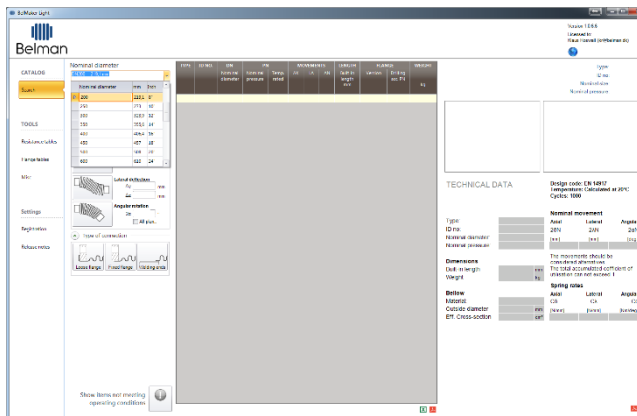
Registration details are not obligatory, but will help Belman to provide support and extended features.



HOW TO FIND THE EXPANSION JOINT

Search by application/operating condition

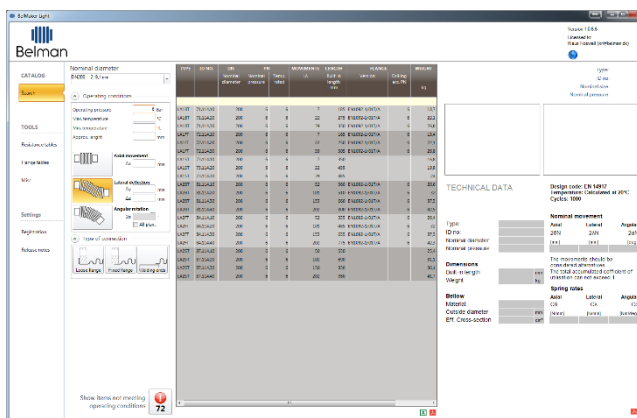
1. Select dimension of expansion joint under “Nominal diameter”.



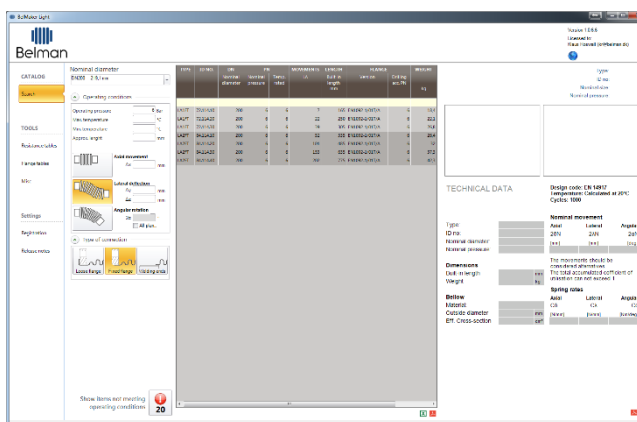
2. Input design parameters in “Operating conditions”.

3. Select type of movement by pressing the movement symbol “Axial”, “Lateral” or “Angular”, or by typing the movement amplitude in the corresponding input fields.

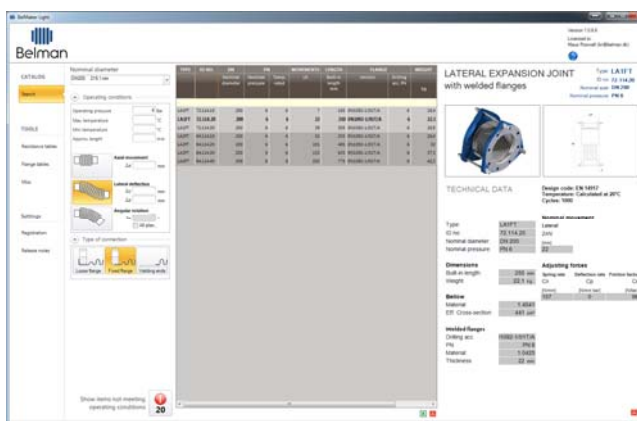
4. A list of applicable items will be displayed in the table.



5. The list can be filtered by selecting a single or multiple connection types under “Type of connection ends”.



6. Select an item by clicking it with the mouse, and its data and drawings are shown in the panel to the right.

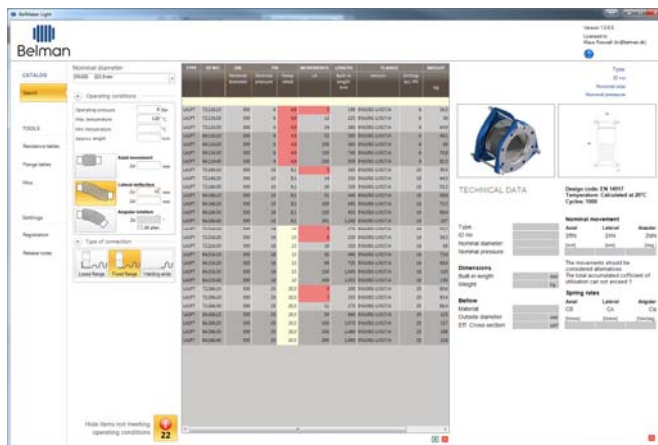


Auto filtering

1. When searching catalogue items, BelMaker Light® will help you by displaying relevant items. This means that items, not matching the operating condition exactly, will automatically be hidden.
2. By clicking the red exclamation mark in the bottom – you can show/hide items that are close to your search, but do not match your search exactly.

Values that differ, but are higher than requested, are marked with yellow background color.

Values that differ, but are lower than required, are marked with red background color.

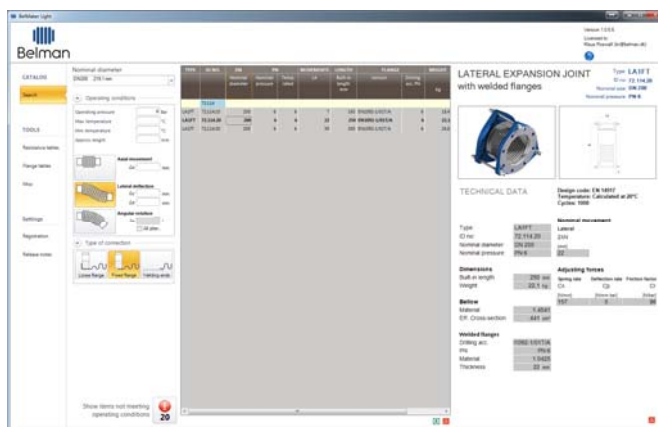


Manual filtering data in the list

1. The data in the list can be filtered on any column information by using the yellow filter row in the top of the list. A filter value can be reset by pressing the “Delete” key on the keyboard.

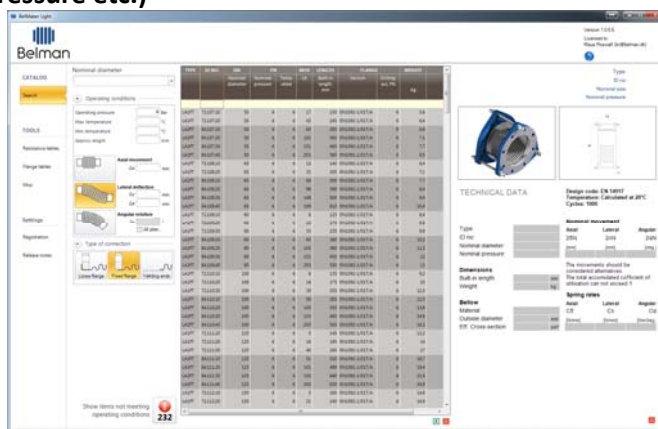
Ex. filter by ID number

Type the ID. No. into the filter row in the ID No. column and press “Enter” or leave the cell. The list will now be filtered and show the items containing the inputted value.



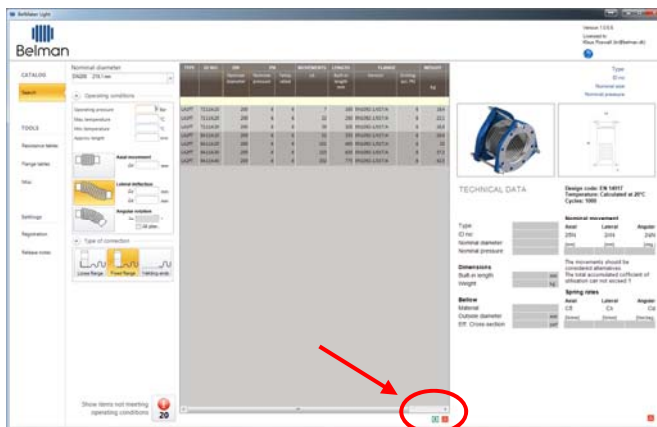
Browse by type of expansion joint (see all sizes, pressure etc.)

1. Clear the “Nominal diameter” input field by selecting it and press the “Delete” key on the keyboard.
2. Select “Axial movement”, “Lateral movement” or “Angular rotation”.
3. All items related to the type will be displayed.

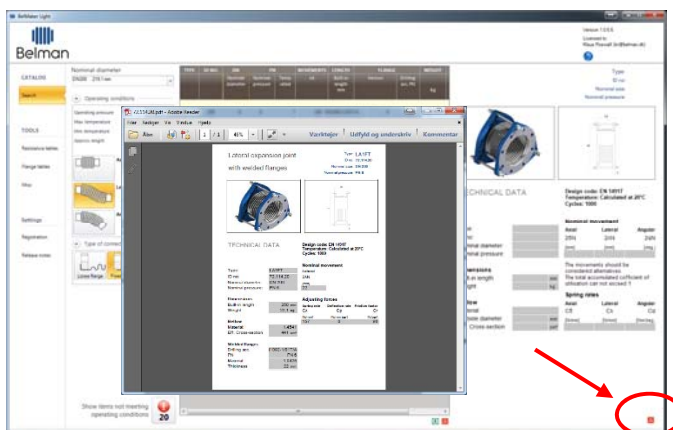


Exporting data

1. The table can be exported as PDF and/or csv files (excel) by pressing the “PDF” icon and/or the “Excel” icon.
2. The data will automatically open in a new window in your default application.



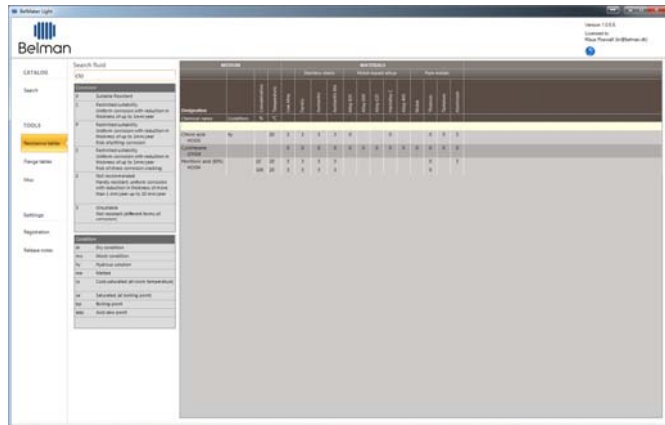
3. The technical data for a selected item can be exported as a PDF file by pressing the “PDF” icon.
4. The page will automatically open in a new window in your default pdf viewer.



TOOLS

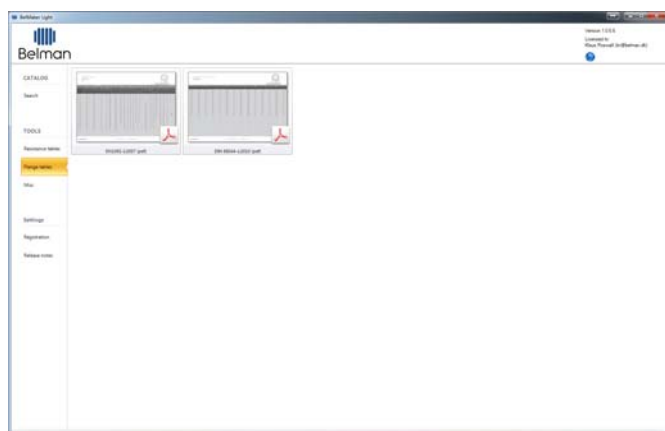
Resistance tables

1. Select **Tools** → **Resistance tables**.
Type in the media designation or chemical name, for the media you are looking for in "Search Fluid".
2. The medias related to your search phrase, appears with corrosion and condition abbreviations, which is explained in the left panel.



Flange tables

1. Select **Tools** → **Flange tables**.
2. For our catalogue items, we have been using EN1092-1 and DIN 86044 flanges. These are available as pdf files by clicking the picture.



Miscellaneous

1. Select **Tools** → **Misc**.
2. **Isometric paper**
The isometric paper are available as a pdf file, and can be used for making swift sketches of pipe layout etc.



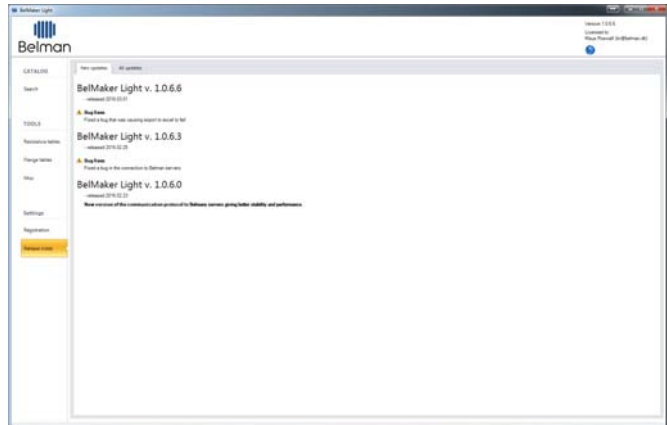
UPDATES ETC.

New features, updates in BelMaker Light®

BelMaker Light® is still in its early stages and will continuously be improved with updates and new features.

Although functioning as an offline application, BelMaker Light® will check for updates and synchronize data and program logic whenever an internet connection is available. It will inform about the new features implemented.

By selecting **Settings** → **Release notes**, you are always able to track the development and see the updates released in your current version of BelMaker Light®.



CONTACT

Further assistance

If you have any questions how to use the system, please contact your daily contact person.

If you have any technical questions, download problems etc. please contact Klaus Roswall, kr@belman.dk, +45 7612 2626