



PENETRATION SEALS

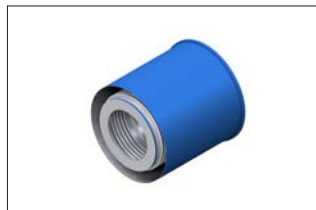
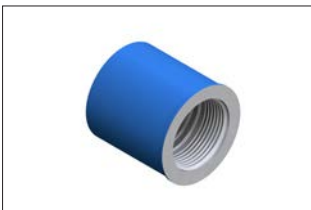
BY BELMAN

Metallic Expansion Joints can function as Penetration Seals if designed especially for the purpose. Belman has developed a product line of Penetration Seals, and some of the types are shown here. As Belman is very strong in

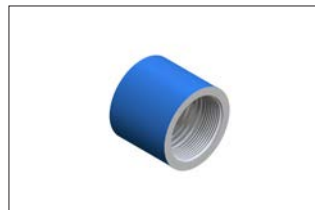
customised Expansion Joint solutions, our Penetration Seals are also in most situations customised. Penetration Seals by Belman are an airtight solution to wall penetration and it allows axial and lateral movement without causing high

stresses on penetration pipe and wall. As the Penetration Seals by Belman is made from stainless steel they are maintenance free.

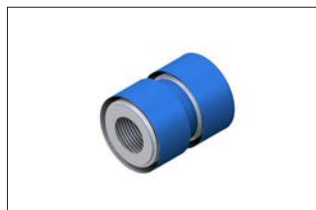
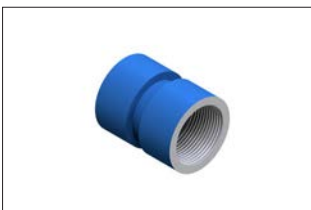
Type 1



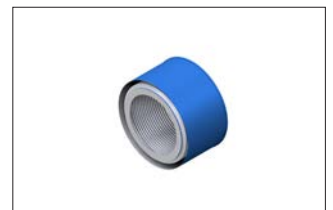
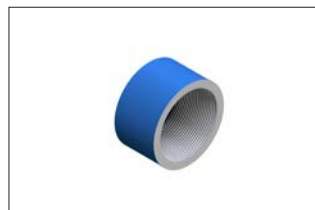
Type 2



Type 3



Type 4



Sizes

DN 25 - 12.000

Materials

All stainless steels and higher alloyed steels

Design codes

EJMA, EN, ASME or per client request.